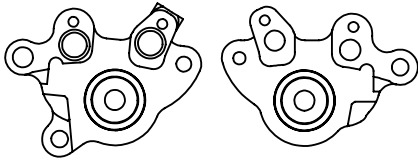


Caliper assembly instructions

Thank you for purchasing this Moto-Master performance product. Please read these instructions carefully before attempting installation. *

Step 1

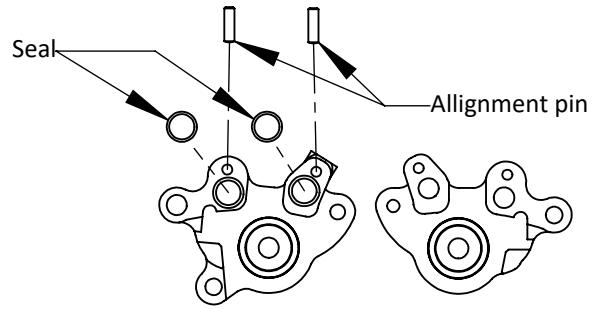
Place both caliper bodies on a clean, flat surface as pictured.



Step 2

Insert the 2 seals in the circular slots around the holes as pictured below. The slots are present on only one of the two caliper bodies.

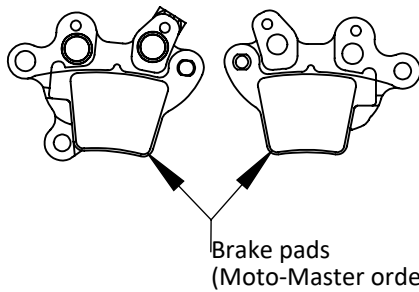
Insert alignment pins in the holes as pictured below in the caliper body which has the slots for the seals.



Step 3

Insert the brake pads with the backplate facing down (brake pad compound facing up).

Note: The brake pads left and right are not the same.

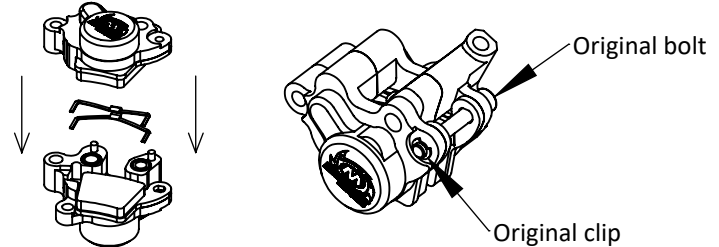


Step 4

Put the spring in between the brake pads while placing the body without alignment pins and seals on top of the other body.

Make sure the seals are positioned correctly!

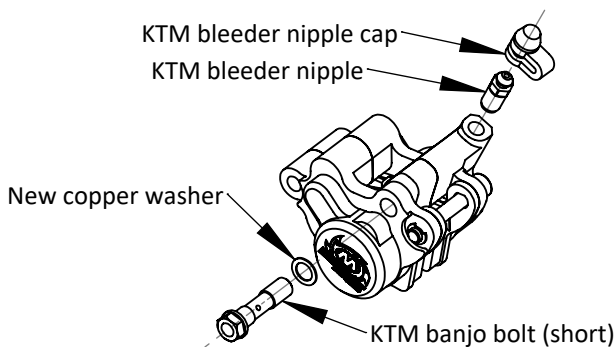
Use the bolt from the original KTM caliper to connect both sides + brake pads. Use the original clip to secure this bolt. Tightening Torque M6 bolt: 10 Nm.



Step 5

Install the shortest of two KTM banjo bolts (from the original KTM caliper) with a new copper washer as pictured below.

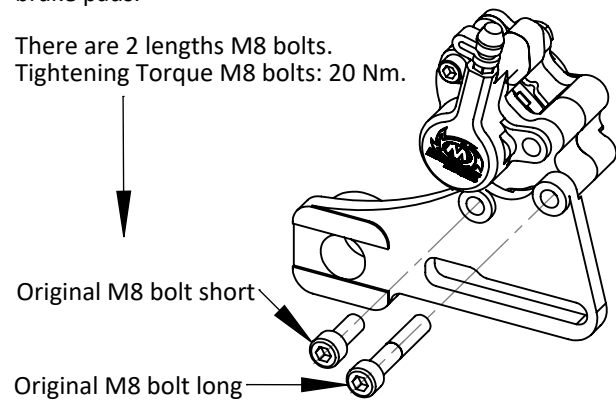
Install the original KTM bleeder nipple and cap in the bleed hole.



Step 6

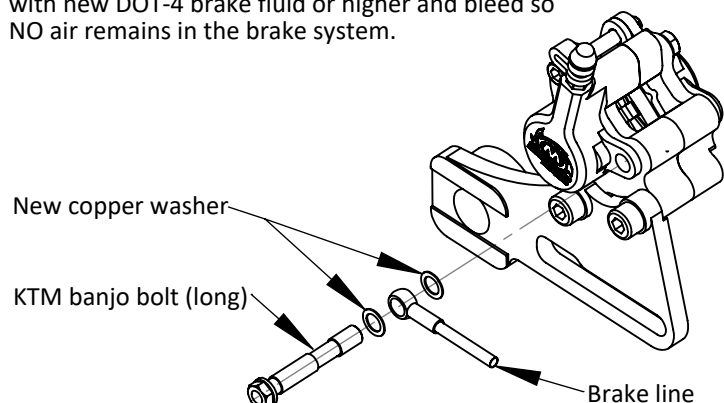
Install the caliper on the bike with the two original KTM M8 mounting bolts. Make sure the brake disc is positioned between the brake pads.

There are 2 lengths M8 bolts. Tightening Torque M8 bolts: 20 Nm.



Step 7

Connect brake line with the longest of two original KTM banjo bolts and use 2 new copper washers as pictured below. Refill the system with new DOT-4 brake fluid or higher and bleed so NO air remains in the brake system.



*Consult a certified dealer of professional mechanic if you are not fully qualified in motorcycle maintenance. Moto-Master cannot be held responsible for any damage or injury caused by incorrect product mounting, disregarding specifications and these instructions, or product mounting by an unqualified third party.

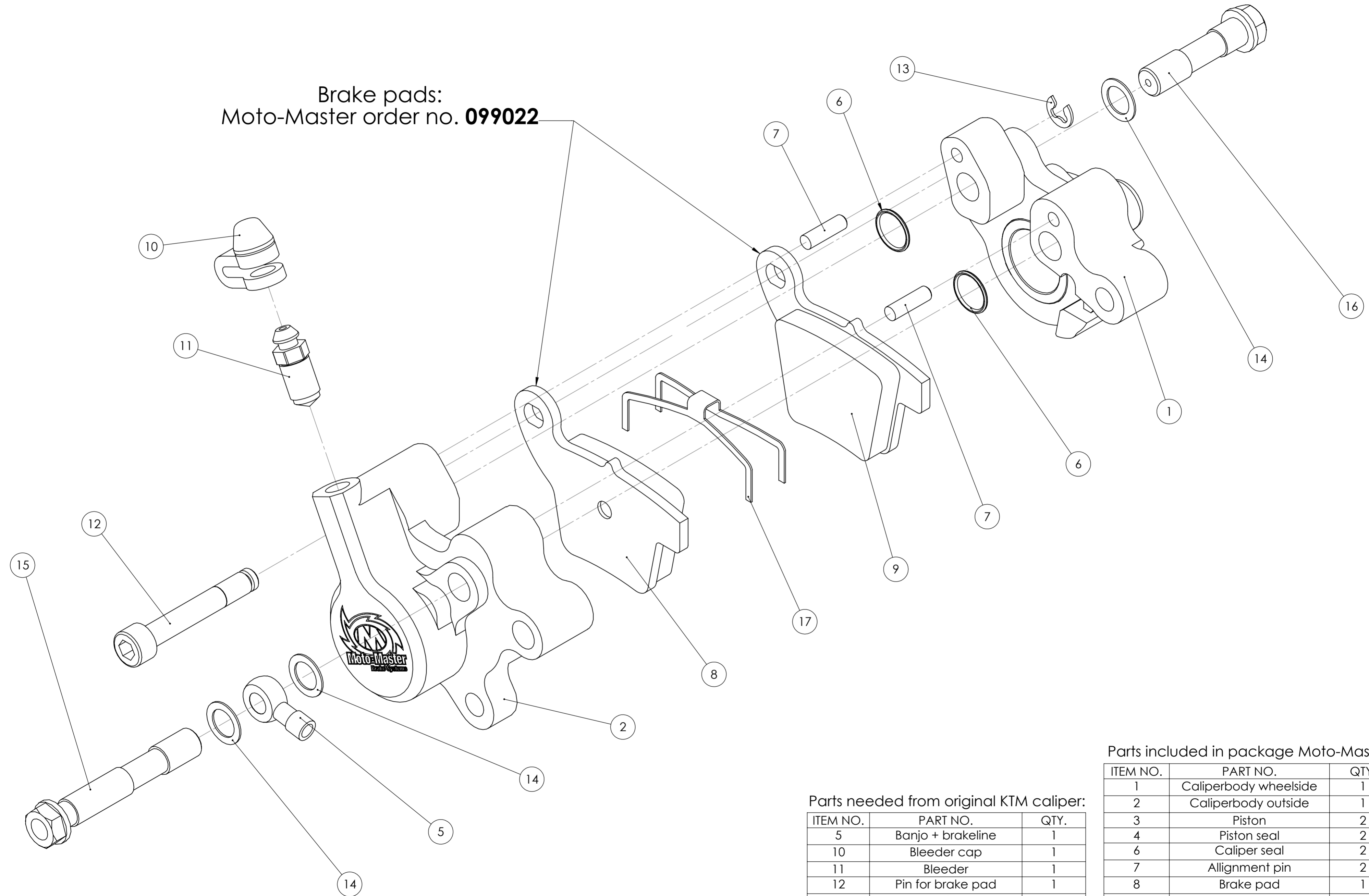


For more info, check:

www.moto-master.com

Partlist Moto-Master Caliper 010055

Brake pads:
Moto-Master order no. **099022**



Parts included in package Moto-Master:

ITEM NO.	PART NO.	QTY.
1	Caliperbody wheelside	1
2	Caliperbody outside	1
3	Piston	2
4	Piston seal	2
6	Caliper seal	2
7	Alignment pin	2
8	Brake pad	1
9	Brake pad	1
14	Copper washer	3
17	Spring	1

Parts needed from original KTM caliper:

ITEM NO.	PART NO.	QTY.
5	Banjo + brakeline	1
10	Bleeder cap	1
11	Bleeder	1
12	Pin for brake pad	1
13	Clip	1
15	Banjo bolt (long)	1
16	Banjo bolt (short)	1