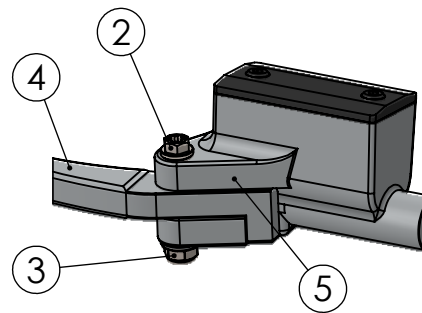
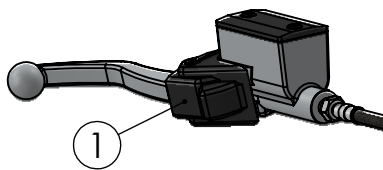


Lever mounting instructions

Thank you for purchasing this Moto-Master performance product. Please read these instructions carefully before attempting installation. *

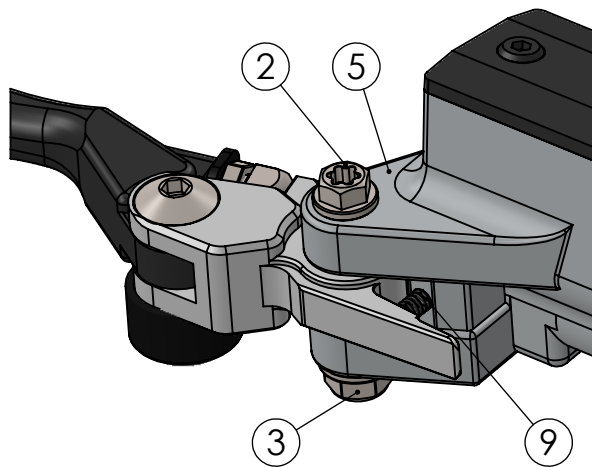
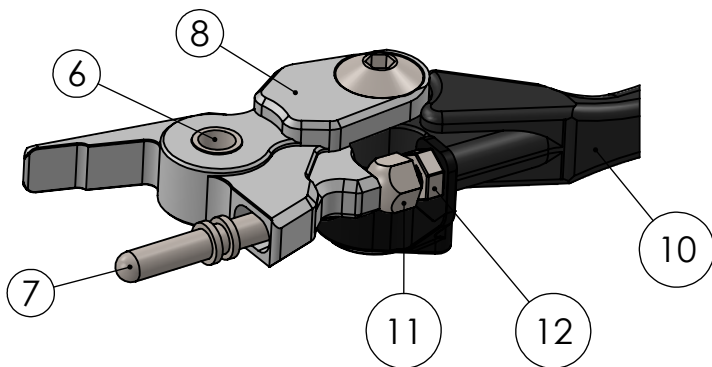
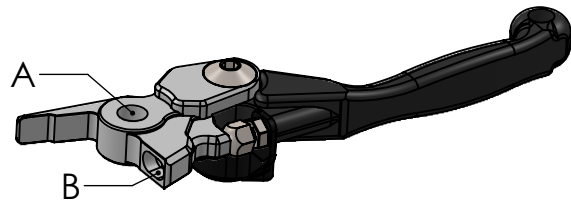
Step 1

Remove rubber mudcover (1).
Remove lever screw (2) and lock nut (3).
Remove lever (4) from clamp (5).



Step 2

Clean the lever mounting area of clamp (5).
Lubricate the internal pivot hole surface [A] and the lever contact area [B].
Place collar (6) in the pivot hole.
Place pressure pin (7) in the Moto-Master arm holder (8).
Make sure the shorter end of the pressure pin (7) is placed in the arm holder (8).
Assemble the Moto-Master lever on to clamp (5).
Mount lever screw (2) and lock nut (3).
Make sure spring (9) is positioned correct. (if applicable)



Step 3

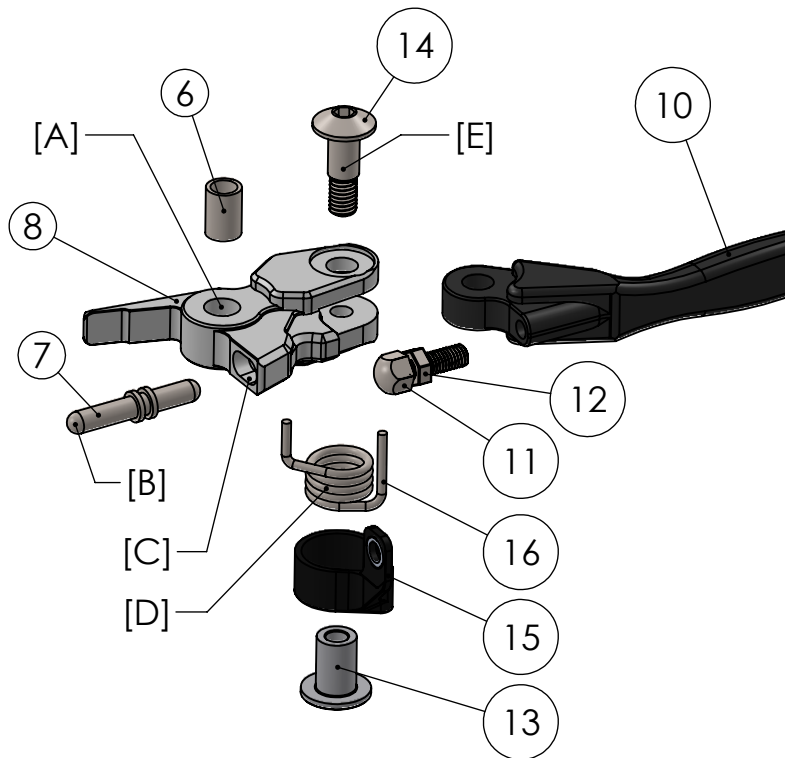
Adjust the position of the lever arm (10).
Tighten the adjust bolt (11) clockwise to decrease the stroke, loosen the adjust bolt (11) counterclockwise to increase the stroke.
Tighten the locknut (12) of the reach adjust mechanism after correct adjustment.

Brake Lever:

Make sure the front brake operates properly.
Set the free travel on the lever in accordance with corresponding motorcycle service manual specifications. Correct if necessary.

Clutch Lever:

Refit and adjust the clutch cable as described in the corresponding motorcycle service manual. (if applicable)



Maintenance

Remove adjust bolt (11) from the lever arm (10).
Remove nut (13) from the lever mount bolt (14).
Remove spring cover (15).
Remove spring (16).
Remove lever mount bolt (14).
Remove lever arm (10).
Clean all parts and lubricate area [A], [B], [C], [D] and [E].
Install lever arm (10) in arm holder (8) and tighten lever mount bolt (14) with loctite 243.
Install spring (16) on arm holder (8) and lever arm (10).
Place spring cover (15) on spring (16).
Mount nut (13) in spring cover (15).
Install adjust bolt (11) with locknut (12) through spring cover (15) in lever arm (10).
Adjust the position of the lever arm (10) as described in step 3.

*Consult a certified dealer or professional mechanic if you are not fully qualified in motorcycle maintenance. Moto-Master cannot be held responsible for any damage or injury caused by incorrect product mounting, disregarding specifications and these instructions, or product mounting by an unqualified third party.



For more info, check:

WWW.MOTO-MASTER.COM